

ProFLEX PU

Product Information



Print. Cut. Press.

High Quality Heat Transfer Flex Film for CAD Cutting / Plotting



ProFLEX PU vinyl is a thermo-weldable film developed specifically for the cutting of numerals, lettering and logos for sportswear and other non-siliconed textiles. Cut to shape using a plotter, ProFLEX PU is easily applied to textiles with a commercial heat press. A non-stick carrier also allows for easier peeling and handling and avoids tangled or marked transfers.

Available in a wide range of colours and washable up to 60°C, ProFLEX is the smart choice for sports or fashion.

Technical Information:

- Material for CAD cutting/plotting
- Washable up to 60°C
- Transfers to cloth: 8 - 12 seconds / 140°C - 160°C / 1.5 - 2 bar
- OKO-TEX STD 100 certified

Packaging:

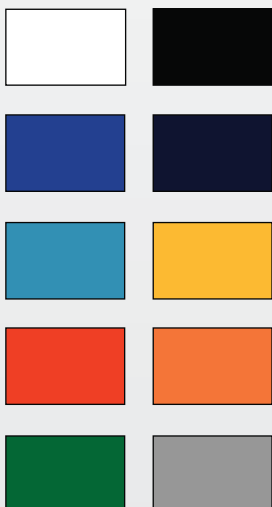
- Rolls of 25 metres - width: 50cm
- By the metre - width: 50cm

Composition:

- *Base:* film thermocollant
- *Adhesive:* Synthetic resin
- *Total weight:* approx 180 g/sqm without carrier
- *Thickness:* 0.50mm (0.55mm including carrier)

Application to material:

- Cotton
- Polyester
- Polyester/cotton
- Lycra



ProFLEX PU

Application Instructions



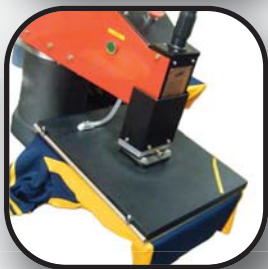
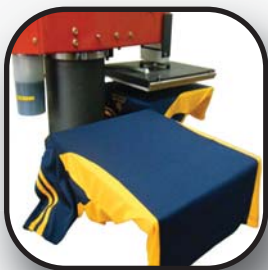
Print. Cut. Press.

Temperature: 150°C - 160°C

Pressure: Firm

Application Time: 8 - 12 seconds

Application Sequence:



Follow these steps for a perfect press!

1. Place the garment on the heat press so that it is sitting flat and straight. Place a cloth over areas such as buttons and zippers to avoid heat marks. Take care to ensure that pressure will distribute evenly when pressing near these raised surfaces.
2. Perform a pre-press using the settings listed above to ensure the garment is dry and primed for the proper press.
3. Place the transfer in the desired position on the garment, taking care to ensure no bubbles or wrinkles form underneath.
4. Commence the press. Once completed, rub the transfer over with a cloth for a few seconds and allow sufficient time for the transfer to cool before removing the carrier backing.

Troubleshooting:

- Q.** *The transfer is not sticking onto the garment properly!*
- A.** Not enough pressure is being applied / temperature is set too high or low / garment is not dry. Try a few sample presses.
- Q.** *After I press, there is glue running out the sides of the transfer and/or a white powdery finish and/or the transfer is warped!*
- A.** Reduce the temperature and/or the amount of time.

Please Note: While we try our best to provide accurate information, please be aware that textiles vary in their material compositions and all heat presses differ slightly in their pressure and temperature settings. Always perform a couple of sample tests before you commence your proper pressing run.